

# Investigation on the operating floor of the Reactor Building of Unit 2 Fukushima Daiichi NPS

February 27, 2012

Tokyo Electric Power Company



東京電力

---

## Outline of the Investigation on the R/B Operating Floor of Unit 2

---

### ■ Target

To investigate all we can, in order to work, such as handle spent fuels, on the 5th floor (operating floor) of the Reactor Building (R/B) of Unit 2

### ■ Contents

To work following operations at the Unit 2 R/B, using remote controlled Quince

- Visual confirmation (video recording) and dose measurement on the R/B 5th floor
- Thermo-hygrometer measurement and dust-sampling on the R/B 5th floor

### ■ Staff

5 TEPCO employees

### ■ Schedule

Feb. 23(Thu) and 24(Fri): mock-up test at Unit 5

Feb. 27(Mon): investigation on the 5th floor of Unit 2 (backup Feb. 28)

### ■ Expected exposed dose

4.5 mSv/man (to step in the R/B in order to cut cables)

# Investigation Area

The 5th FL (operation floor) of R/B at Unit 2

Temporarily placed equipment

Former investigation rout and investigation area  
the number is radioactivity (mSv/h)

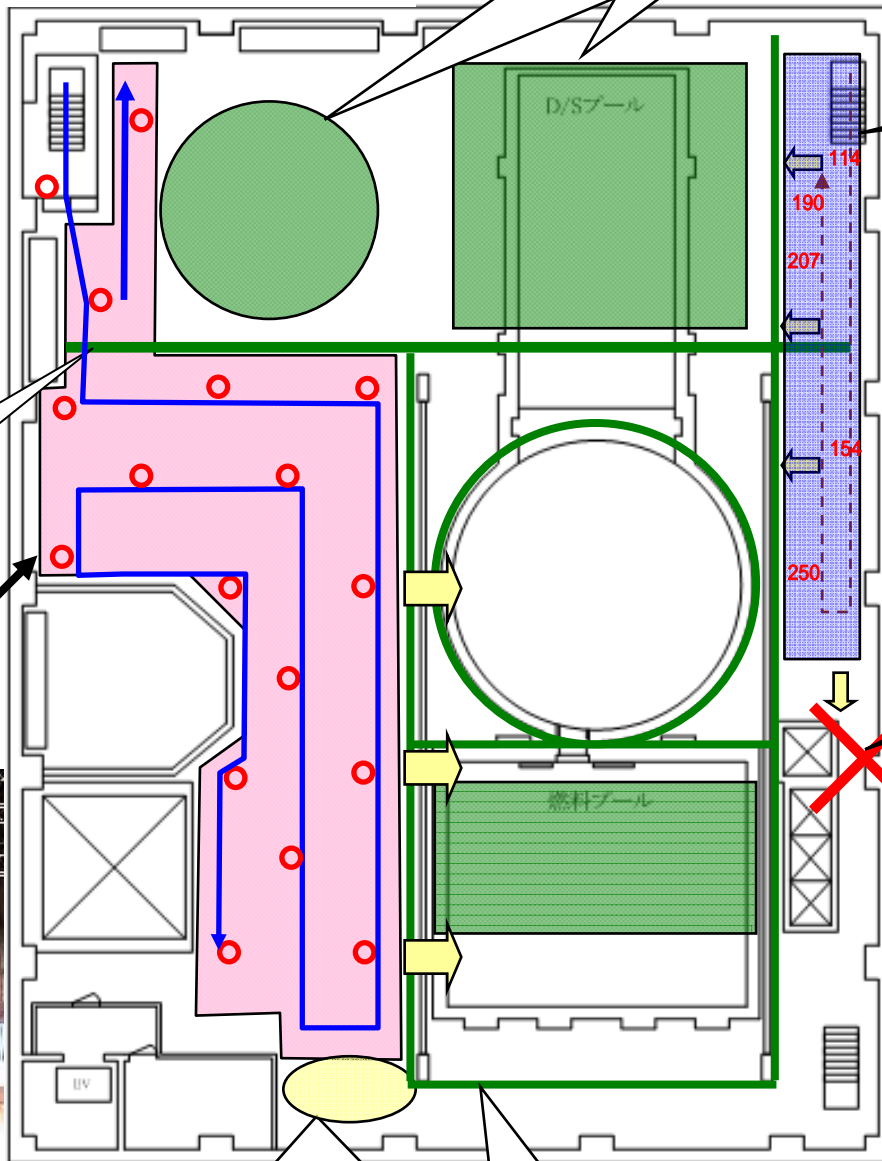


Planned measure points

Partition

**Investigation area**

Measurement items  
Temperature, humidity,  
radioactivity, dust



Impassable



Add measure points if needed

Impassable

1m fence

# Quince 2



- Quince 2
  - Size: L1.1 (0.7) × W0.5 × H1.1m
  - Weight: 48kg
- Function
  - Monitoring
    - ◆ 7 cameras
    - ◆ Dose measurement
    - ◆ Thermo-hygrometer
    - ◆ Dust-sampling
  - Maximum loading capacity: 20kg
- Travelling performance
  - Maximum speed: 1 [km/h]
    - ◆ Sub-Crawler (obstacle crossing and stairs-going)
- Continuous operation: 3 hours
- Correspondence: Closed-circuit remote control range: 500[m] with wireless mutual support function

# Quince 3



- Quince 3
  - Size: L1.1 (0.7) × W0.5 × H1.1m
  - Weight: 48kg
- Function
  - Monitoring
    - ◆ 6 cameras
    - ◆ Dose measurement
    - ◆ Thermo-hygrometer
    - ◆ 3D-Scanner
  - Maximum loading capacity: 10kg
- Travelling performance
  - Maximum speed: 1[km/h]
    - ◆ Sub-Crawler (obstacle crossing and stairs-going)
- Continuous operation: 3 hours
- Correspondence: closed-circuit remote control range: 500[m] with wireless mutual support function