

Visual inspection of the inside of Unit 2 PCV (Completed on May 29)

Visual inspection of the inside of Unit 2 PCV was completed on May 29, 2012.

As a result, we found no leakage of reactor coolant or deformation/damage of equipments and piping inside PCV and that there are no factors hindering the cold shutdown function.

Though minor issues were found such as the paint inside PCV partially coming off (due to the temporary temperature rise after the plant shutdown) and rust on the surface of some equipments (due to humidity change), these do not have impact on the cold shutdown function (As mentioned in the press release issued on May 29, 2012).

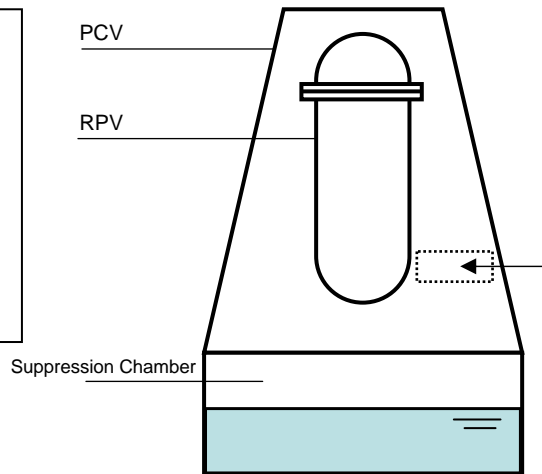
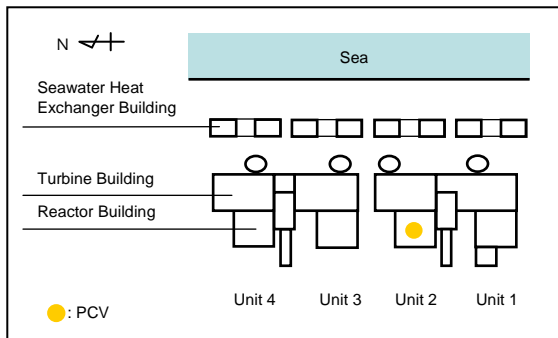
< Visual inspections conducted (As of the end of May, 2012) >

Unit 1: December 27, 2011 – February 28, 2012 [Completed]

Unit 2: March 6, 2012 – May 29 [Completed]

Unit 3: February 14, 2012 – April 5, 2012 [Completed]

Unit 4: August 29, 2011 – December 21, 2011 [Completed]



Facilities subject to the visual inspection

Visual inspection was completed on May 29, 2012. As a result, we found no leakage of reactor coolant or deformation/damage of equipments and piping inside PCV and that there are no factors hindering the cold shutdown function.



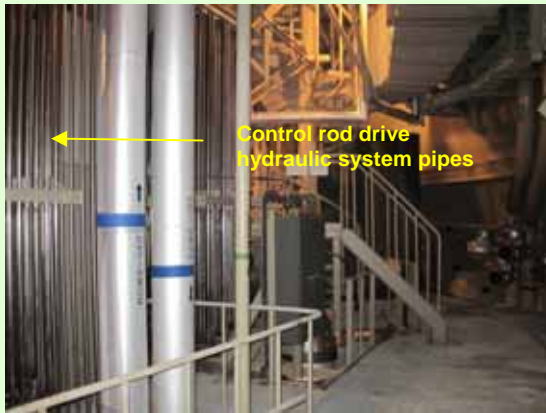
1. PCV entrance (Airlock for workers)
(Photo taken on May 10, 2012)



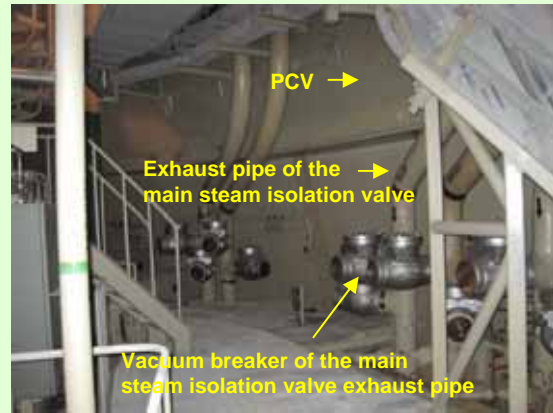
2. Inside PCV (Main steam isolation valve)
(Photo taken on April 17, 2012)

Facilities subject to the visual inspection (Cont'd)

Visual inspection was completed on May 29, 2012. As a result, we found no leakage of reactor coolant or deformation/damage of equipments and piping inside PCV and that there are no factors hindering the cold shutdown function.



3. Inside of PCV: Near the control rod drive hydraulic system pipes
(Photo taken on April 11, 2012)



4. Inside of PCV: Near the control rod drive hydraulic system pipes
(Photo taken on April 11, 2012)



5. Visual inspection
(Photo taken on May 10, 2012)



6. Main steam isolation valve
(Photo taken on April 11, 2012)



7. Visual inspection
(Photo taken on May 10, 2012)



8. Pedestal (Base structure of RPV)
(Photo taken on May 10, 2012)

Minor issues detected (As mentioned in the press release on May 29, 2012)

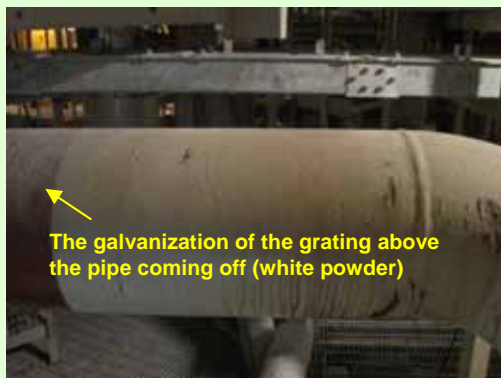
Due to the temporary temperature/humidity increase after the plant shutdown, minor issues were found such as the paint inside PCV partially coming off and rust on the surface of some equipments. However, these do not have impact on the cold shutdown function.



9. Rust on the vacuum breaker surface (Photo taken on April 17, 2012)



10. Paint coming off on the main steam system pipe (Photo taken on March 13, 2012)



11. Galvanization of the grating coming off (white powder) (Photo taken on April 17, 2012)



12. Acrylic cover discoloration on the motor-operated valve angle indicator (Photo taken on March 13, 2012)