

Fukushima Daiichi Nuclear Power Station

Status of Unit 1 Large Cover Installation Crane

< R e f e r e n c e d o c u m e n t >
J u n e 3 0 , 2 0 2 5
Tokyo Electric Power Company Holdings, Inc.
Fukushima Daiichi Decontamination &
Decommissioning Engineering Company

- On June 16, when a 1,250 ton crawler crane (hereinafter “the crane”) was being used to install the steel frame blocks of the large cover (box ring) on the east side of the Unit 1 reactor building, it suddenly became impossible to lower the main hook of the crane.
- An investigation has found that there is a foreign object in the crane's hydraulic system and it made the crane impossible to lower its main hook because the presence of the foreign object meant that the necessary hydraulic pressure could not be secured.
- Thereafter, the crane’s hydraulic oil and hydraulic control units were flushed and replaced, and it was confirmed that there were no problems with the crane's hoisting and lowering operations.
- On June 24, the box ring was released from the crane and the spreader frame was lowered to the ground.
- On June 27, an issue was found with the action of the cylinder* used to adjust the ground pressure of the cranes the external counterweight trolley.
- Going forward, in order to prevent problems during the work, so work was suspended to investigate the cause.
- There is no hanging load on the aforementioned crane and it is being kept in a stable position.

* Equipment to adjust counterweight ground pressure to a constant level

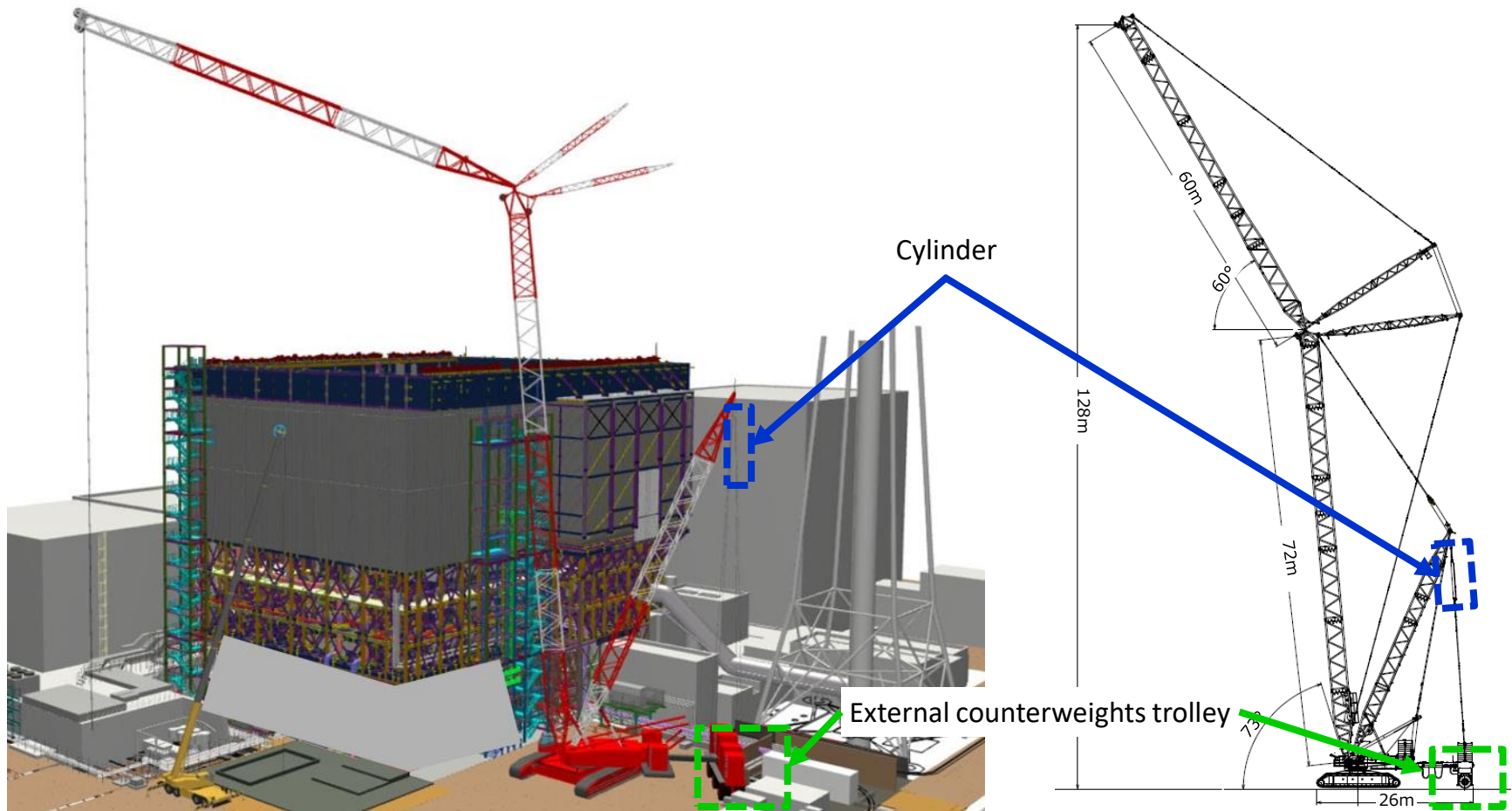


Diagram of Unit 1 large cover

1,250t crawler crane

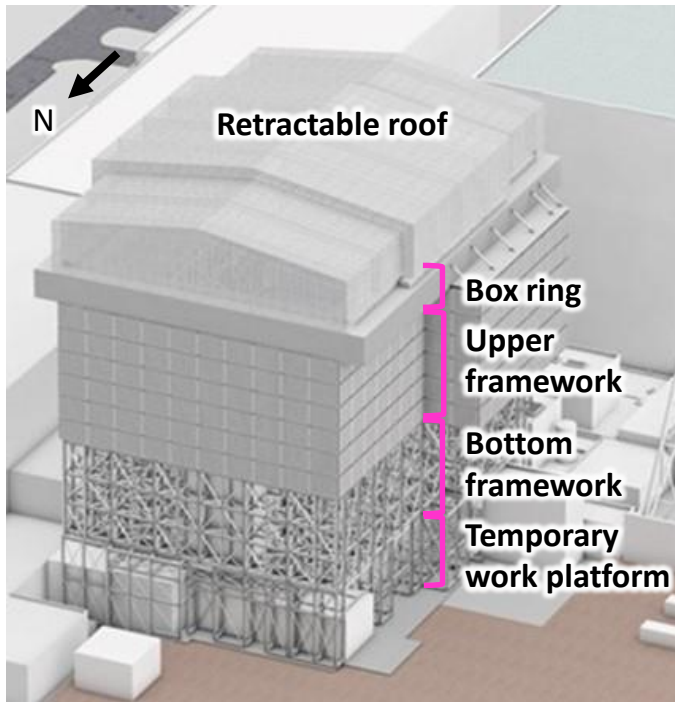
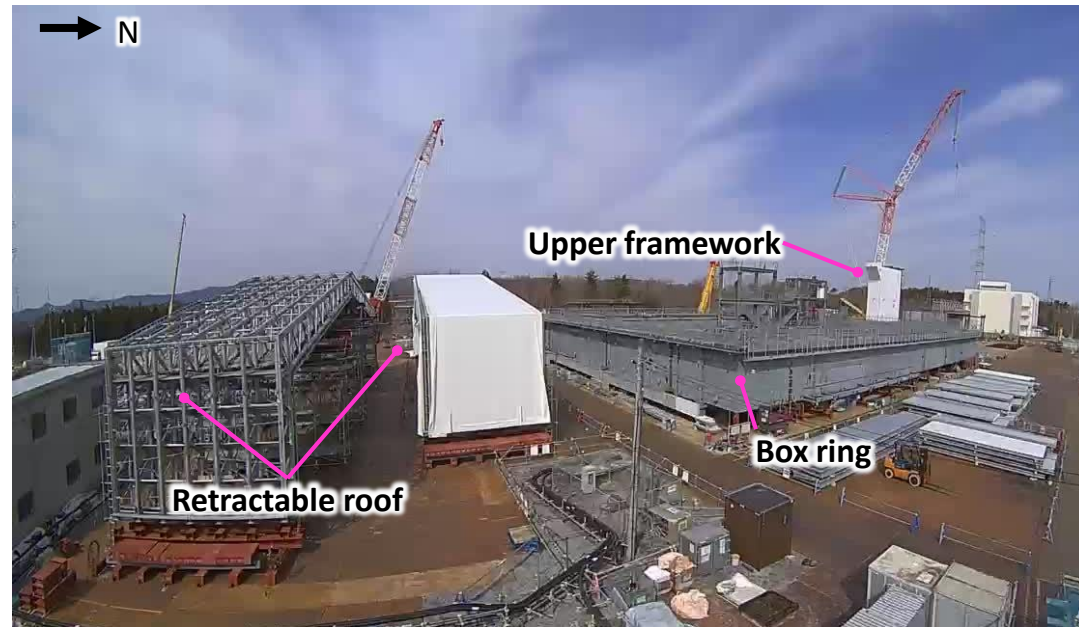


Diagram of the entire large cover



Off-site yard (photographed on March 24, 2025)