

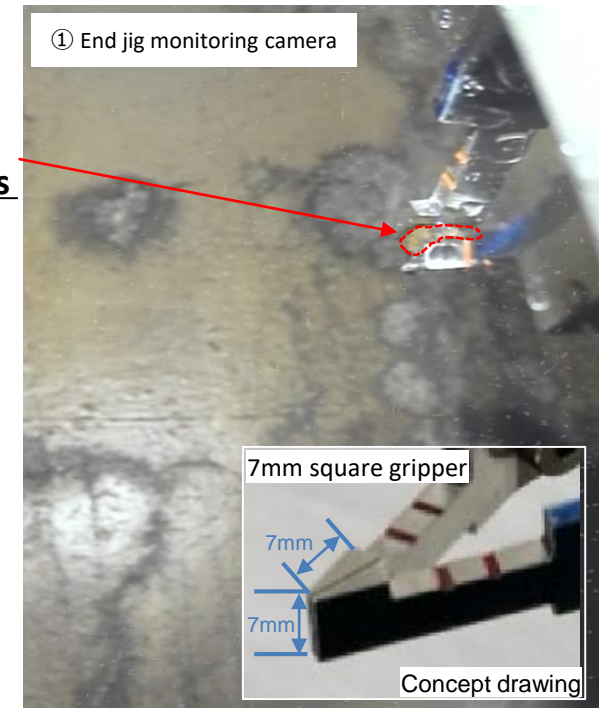
- At 10:00 a.m. on April 17, it was determined that the bottom of primary containment vessel could be accessed through the opening 2, and at 10:52 a.m. fuel debris was grasped below the opening 2. Thereafter, at 11:38 a.m. the telescopic device with fuel debris sample in hand was retracted to the position it was in prior to commencement of this task.
(Completion of fuel debris grasping work)
- Going forward, the guide pipes will be withdrawn and the telescopic device will be retracted into the enclosure. When the fuel debris sample is brought into the enclosure, its dose measurements will be taken.



Above the opening 2



Grasping fuel debris below the opening 2



Completion of fuel debris grasping work

Fuel debris grasping work at the Fukushima Daiichi Nuclear Power Station Unit 2

(Photographed on April 17, 2025)

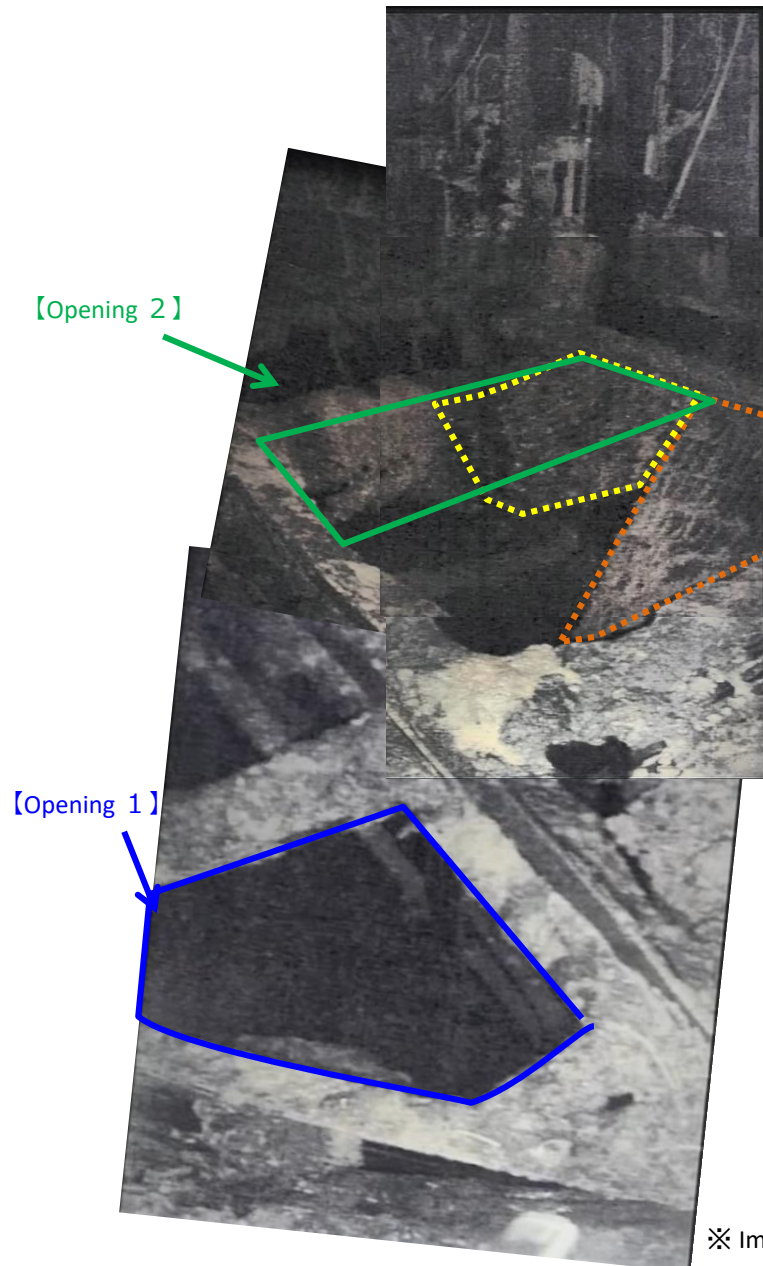


Remote operations room

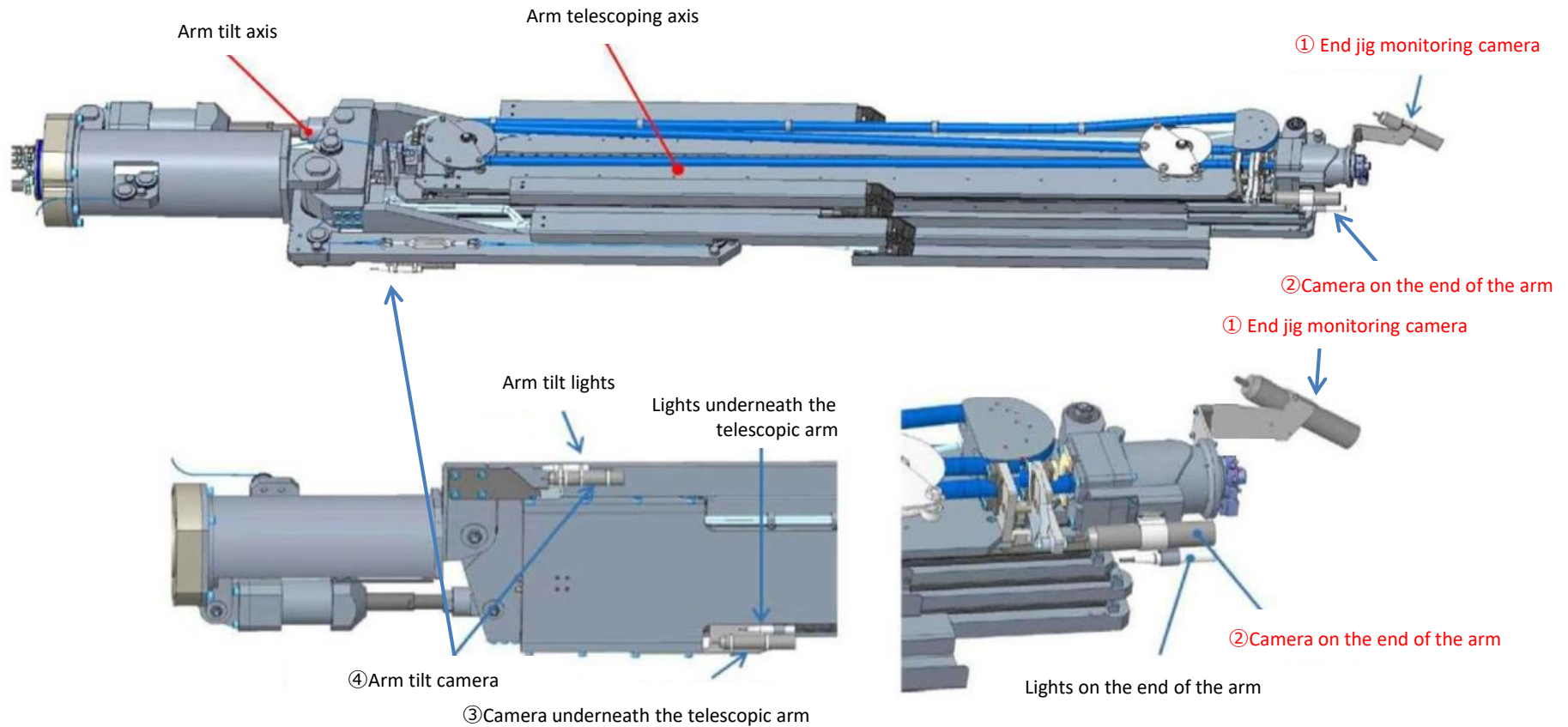
Fuel debris grasping work at the Fukushima Daiichi Nuclear Power Station Unit 2

(Photographed on April 17, 2025)

2-2. Workplan for retrieval fuel debris with the telescopic device (Condition of platform around opening 2 in the PCV)



- The conditions of opening 2 (shown in green on the left) were confirmed using photos taken with the telescopic device camera during work in September 2024.
- Grating shown in the yellow dotted area on the left can be seen around opening 2.
- However, it's difficult to see the borders of the grating and the outline of it can be just barely seen by the light reflecting off of it.
- If the grating completely fills in the yellow dotted area, that will mean that the grating will obstruct almost half of opening 2.
- We have confirmed that grating still exists right in front of opening 2 in the area shown by the orange dotted line.



Status of cameras installed on the telescopic device