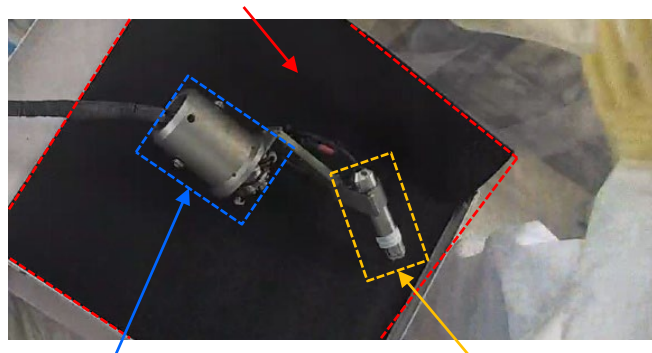


Replacing the Cameras/Improved End Jig in Preparation for the Second Fuel Debris Trial Retrieval from Unit 2

- Replacement of the cameras (① end jig monitoring camera, ② camera on the end of the arm) and the end jig with an improved model on the telescopic device was completed by April 9 and we confirmed that the cameras ① and ② and the end jig work properly.
- Overall operational check of the telescopic device and removal of the work house will be carried out on or after April 11.
- The second fuel debris trial retrieval can be scheduled to begin in the week of April 14 as soon as all preparation works are done properly.
- Details on when exactly the next fuel debris trial retrieval is commence will be announced at a later date.

Work table (Enclosure side)

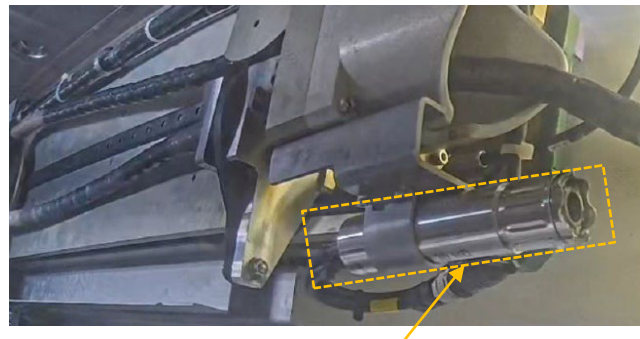


Lowering part

① End jig monitoring camera

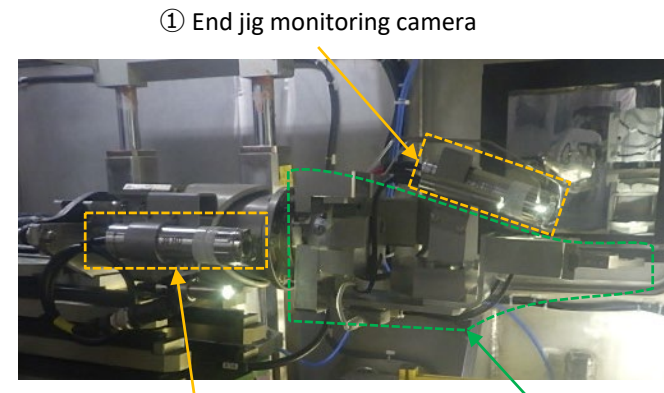
Replaced ① end jig monitoring camera
(Photographed on April 7, 2025)

*Photographed from an overhead position



② Camera on the end of the arm

Replaced ② camera on the end of the arm
(Photographed on April 8, 2025)



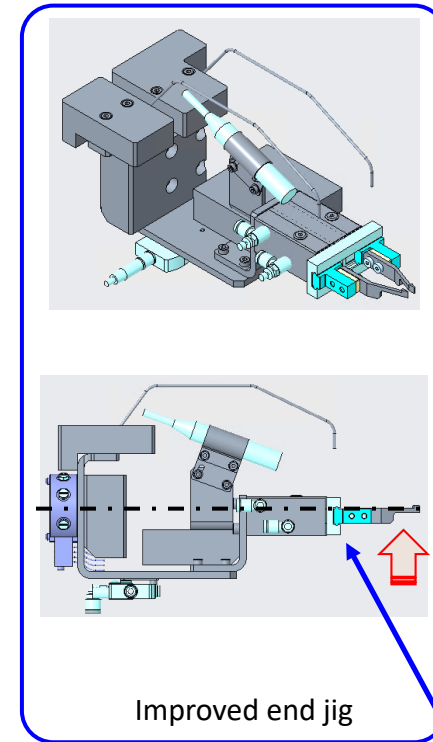
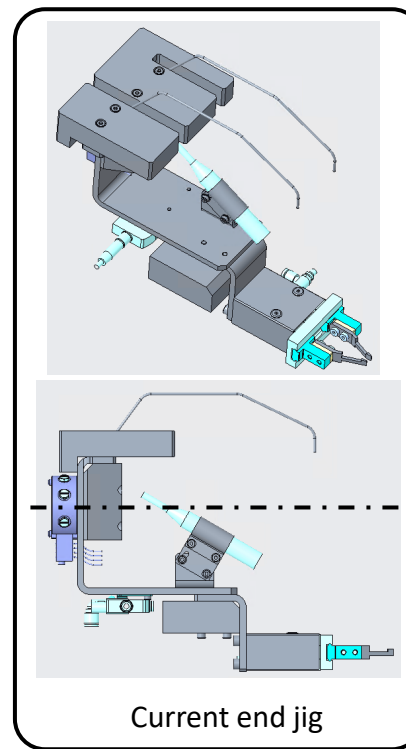
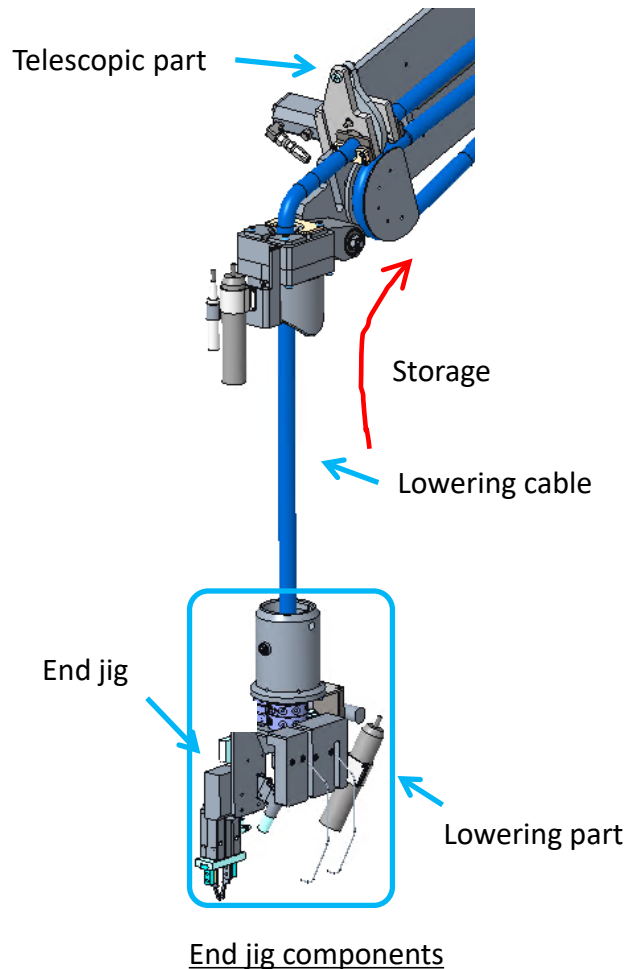
② Camera on the end of the arm

Improved end jig

Replaced cameras ①② and improved end jig
(Photographed on April 9, 2025)

Training on replacing cameras and the end jig
(Location: Fukushima Daiichi Nuclear Power Station Unit 2)

- During the first fuel debris sampling, time was required to maneuver the end jig because the lowering part was not stable. So we are deliberating how to improve the maneuverability of the end jig before sampling additional fuel debris.



Concept diagram of end jig improvements

Stability has been improved by moving the location of the gripper to the center of rotation of the end jig